



MutS Protein Homolog 2(MSH2) rabbit mAb(ABT21R)

Catalog No	YP-Ab-15496
Isotype	IgG
Reactivity	Human
Applications	IHC;IF
Gene Name	MSH2
Protein Name	MutS Protein Homolog 2(MSH2)
Immunogen	Synthesized peptide derived from human MutS Protein Homolog 2(MSH2)
Specificity	This antibody detects endogenous levels of MutS Protein Homolog 2(MSH2) at Human
Formulation	Liquid in PBS containing 50% glycerol, 0.5% BSA and 0.02% sodium azide.
Source	Polyclonal, Rabbit,IgG
Purification	The antibody was affinity-purified from Cell supernatant by affinity-chromatography using specific immunogen.
Dilution	IHC-p 1:1500. IF 1:50-200
Concentration	1 mg/ml
Purity	≥90%
Storage Stability	-20°C/1 year
Synonyms	DNA mismatch repair protein Msh2 (hMSH2;MutS protein homolog 2)
Observed Band	
Cell Pathway	Nucleus . Chromosome .
Tissue Specificity	Ubiquitously expressed.
Function	disease:Defects in MSH2 are a cause of Muir-Torre syndrome (MTS) [MIM:158320]. MTS is a rare autosomal dominant disorder characterized by sebaceous neoplasms and visceral malignancy.,disease:Defects in MSH2 are a cause of susceptibility to endometrial cancer [MIM:608089].,disease:Defects in MSH2 are the cause of hereditary non-polyposis colorectal cancer type 1 (HNPCC1) [MIM:120435]. Mutations in more than one gene locus can be involved alone or in combination in the production of the HNPCC phenotype (also called Lynch syndrome). Most families with clinically recognized HNPCC have mutations in either MLH1 or MSH2 genes. HNPCC is an autosomal, dominantly inherited disease associated with marked increase in cancer susceptibility. It is characterized by a familial predisposition to early onset colorectal carcinoma (CRC) and extra-colonic cancers of the gastrointestinal, urological and femal
Background	



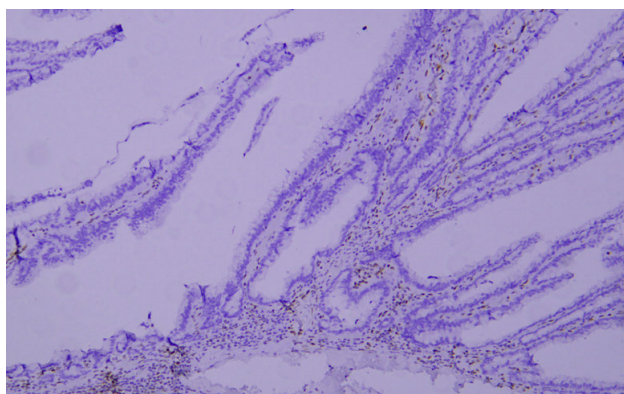
matters needing attention

Avoid repeated freezing and thawing!

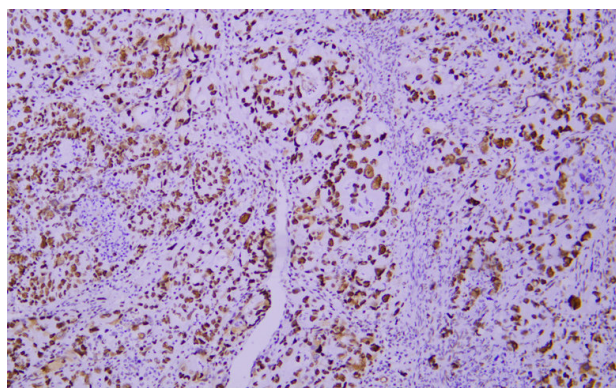
Usage suggestions

This product can be used in immunological reaction related experiments. For more information, please consult technical personnel.

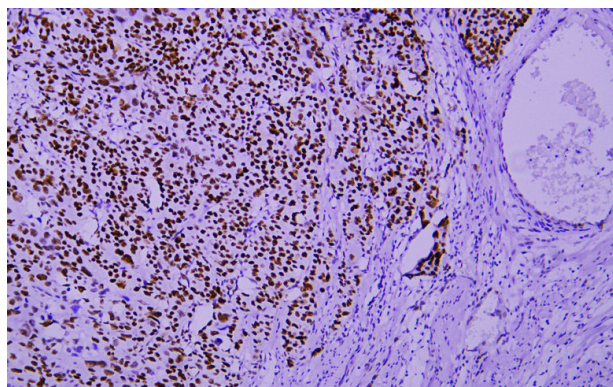
Products Images



Immunohistochemical analysis of paraffin-embedded human Colon adenocarcinomas with loss of PMS2 expression. 1, Antibody was incubated at 4° overnight. 2, TRIS-EDTA of pH9.0 was used for antigen retrieval. 3, Secondary antibody was diluted at 1:200 (room temperature, 30min).



Immunohistochemical analysis of paraffin-embedded human Colon adenocarcinomas with normal PMS2 expression. 1, Antibody was incubated at 4° overnight. 2, TRIS-EDTA of pH9.0 was used for antigen retrieval. 3, Secondary antibody was diluted at 1:200 (room temperature, 30min).



Immunohistochemical analysis of paraffin-embedded human Colon adenocarcinomas with normal PMS2 expression. 1, Antibody was incubated at 4° overnight. 2, TRIS-EDTA of pH9.0 was used for antigen retrieval. 3, Secondary antibody was diluted at 1:200 (room temperature, 30min).